

Four Hundred and Thirty-Three
Montrose Ave

As Presented by Corinne McCabe, Broker



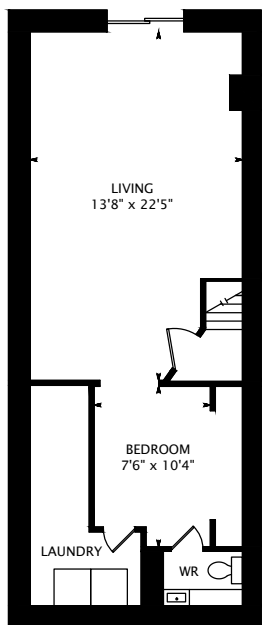
Sought After Neighbourhood Just South Of Bloor & Backing On To Bickford Park, This Spacious 2 Unit Home W/Parking Is A Location Seekers Dream Come True!

Each Unit Contains 2 Levels Of Finished Space, Bsmt W/Walkout To Patio, & 3rd Floor Access To Sun Deck W/City Views. Lovely, Co-Operative Tenants, Main Pays \$1550 & Upper \$1900 Utilities Included. Both Month-Month. So Book Your Showing Today. Great Potential, Superb Location.

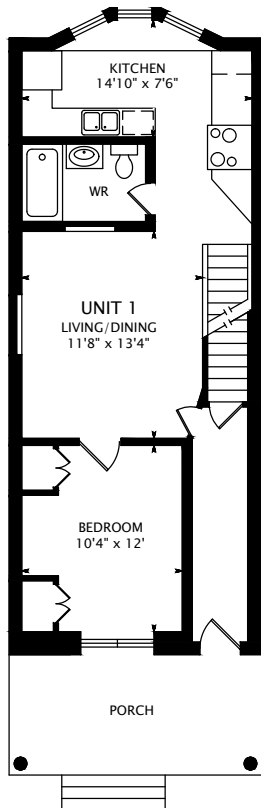
BOSLEY
REAL ESTATE

corinnemccabe.com

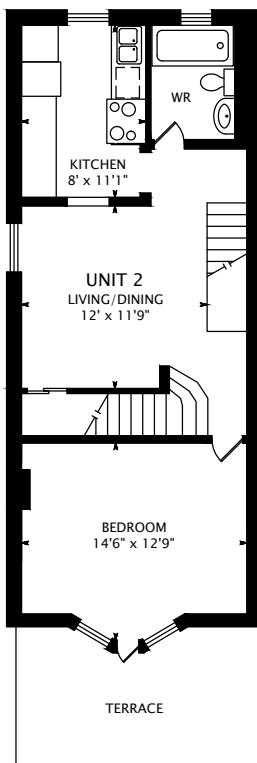
416.322.8000



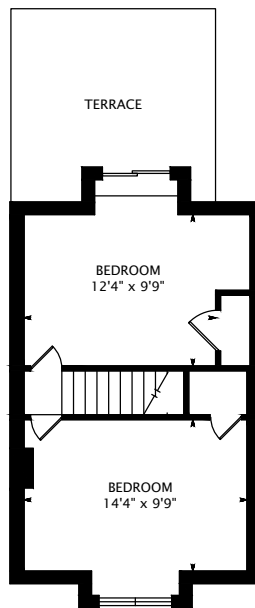
LOWER FLOOR
608 SQUARE FEET



MAIN FLOOR
646 SQUARE FEET



SECOND FLOOR
640 SQUARE FEET



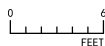
THIRD FLOOR
418 SQUARE FEET



interactive tour: toursler.com/433-montrose



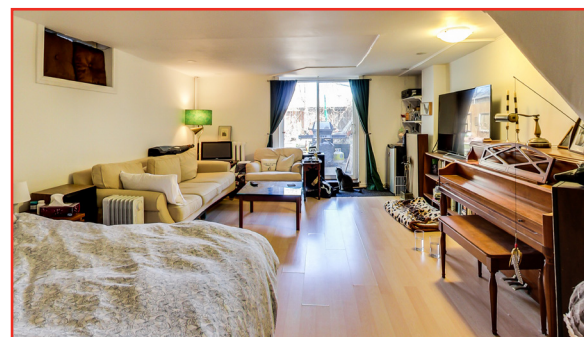
Toursler
toursler.com
info@toursler.com



DATE: APRIL 14, 2015

DIMENSIONS, AREAS, LAYOUTS AND DETAILS ARE APPROXIMATE AND SHOULD BE CONSIDERED ILLUSTRATIVE ONLY.

1704 SQUARE FEET
+ 608 SQUARE FEET BELOW GRADE



Corinne McCabe - broker
416.322.8000
www.corinnemccabe.com
cmccabe@bosleyrealestate.com
Bosley Real Estate Ltd., Brokerage

BOSLEY
REAL ESTATE



All information and statements contained herein, provided by Bosley Real Estate Ltd., Brokerage regarding property for sale, rental or financing is from sources deemed reliable and assumed correct, but no warranty or representation is made as to the accuracy thereof and same as submitted subject to errors, omissions, change of price, rental or other conditions, prior sale or withdrawal without notice.